



### Features:

- No UV or IR light radiation.
- Provide 360° beam angles.
- Very Low Power Consumption:  
Less than 2.5Watts
- Long lifetime: 25000 hours ( $L_{70}$ ).
- High CRI: 75-85
- Correlated Color Temperature: 2700-12000K
- Operating temperature:  $-20^{\circ}\text{C} \sim +60^{\circ}\text{C}$ .
- 12V DC input.
- LED type: 5050SMD

### Benefits

- Energy Cost Savings:  
Over 60% Compared to Incandescent.
- Solid-State:  
High-Shock & High-Vibration Resistant,  
Both Electrical and Mechanical
- Eco-Friendly:  
No Mercury, No Lead Content
- No Hazardous Emissions:  
No UV or IR Radiation
- Constant Light Output:  
Even Lighting, Non-Halation

### Application:

- Used in automobile lights: Turn Signal  
lamp, .Backup lamp, Stop lamp

## Product Specifications:

Base Type	BA15S/1156
Size	Φ 20*42mm
Input Voltage	12V DC
Wattage	2.5W
Operating Temperature	-20℃ ∞ +60℃
Storage Temperature	-30℃ ∞ +70℃
Certification	RoHS Compliant

## Product Selection Guide:

Product	Beam Angle(deg )	Total Lumens(lm)	Color Temp /Wavelength	Color	CRI
AL-1156WW13R-5050	360°	150±5%	2700-3500K	Warm White	≥ 70
AL-1156NW13R-5050	360°	160±5%	4000-4500K	Neutral White	≥ 70
AL-1156W13R-5050	360°	180±5%	6000-6500K	White	≥ 70

AL-/1156/XX/ 13/R/-5050

①

②

③

④

⑤

⑥

① AL: Automotive Light

④ 13:13 pcs of LED

② 1156: Lamp base model

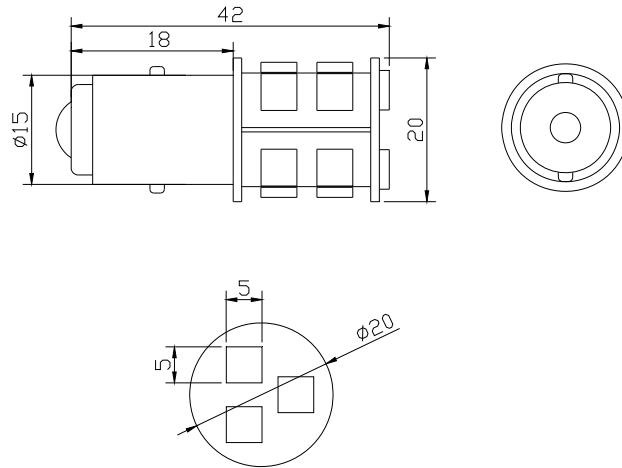
⑤ R:DC12V

③ XX:WW(Warm White) NW(Neutral White)

⑥ 5050: 5050 SMD LED type

W(White)

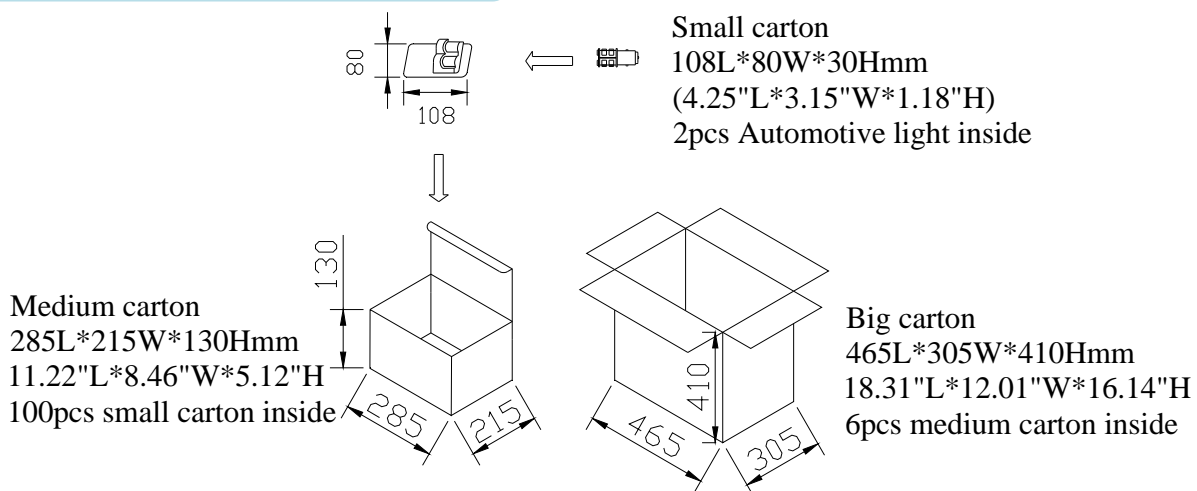
### Product Dimensions:



#### Notes:

1. All dimensions unit in mm
2. Tolerances is  $\pm 0.5\text{mm}$  unless otherwise noted.

### Package Dimension



### Installation Instructions and Warnings:

- Turn off power before inspection, installation, or removal.
- Not for use where exposed to the weather
- Do not use in totally enclosed fixtures.
- Not for use with dimmers.