

Features:

- No UV or IR light radiation.
- Provide 150° beam angles.
- Very Low Power Consumption:
Less than 5 Watts
- Long lifetime: 30000 hours (L₇₀).
- High CRI: 60-70
- Special designed COB technology and aluminum heat sink to prevent degeneration caused by heat
- High flux output
- Correlated Color Temperature: 2700-7000K
- Operating temperature: -20°C ~ +60°C.
- 100-240V AC input.



Benefits

- Energy Cost Savings:
Over 60% Compared to Incandescent.
- Solid-State:
High-Shock & High-Vibration Resistant,
Both Electrical and Mechanical
- Built-in Power with connector
provides an easy installation process
- Constant Light Output:
Even Lighting, Non-Halation

Application:

- Mall center lighting
- Corridor lighting
- Furniture lighting
- Hotel lighting
- Other lighting

Product Specifications:

Lamp Shell	Plastic
Input Voltage	100~240V AC
Wattage	5W
Power Factor	PF \geq 0.8
Operating Frequency	50-60Hz
Operating Temperature	-20℃ ~ +60℃
Storage Temperature	-30℃ ~ +70℃
Net Weight per piece (Kg)	300g
Certification	CE Approved; RoHS Compliant

Product Selection Guide:

Product	Beam Angle	Total Lumens	CCT	Color	CRI
CL-HWW5WC	150°	400 \pm 5%	2700-3300K	Warm White	\geq 70
CL-HW5WC	150°	450 \pm 5%	5000-7000K	White	\geq 60

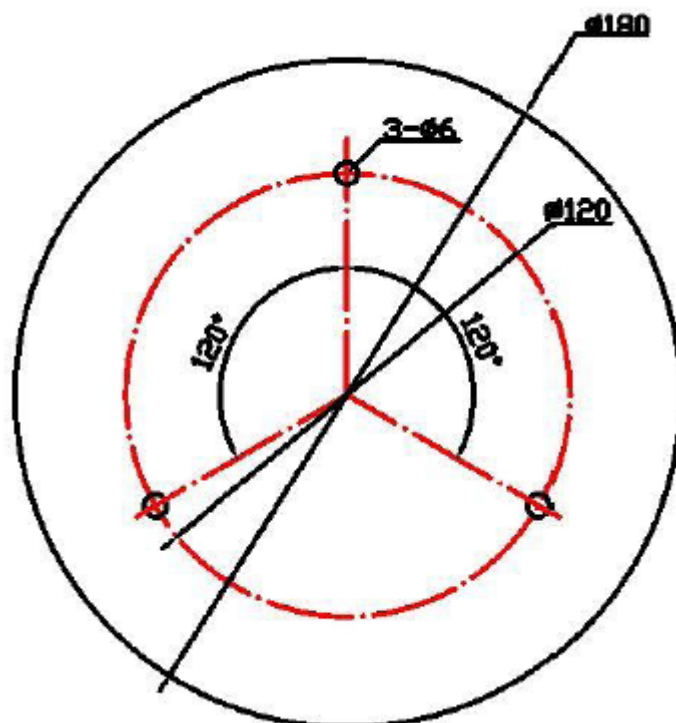
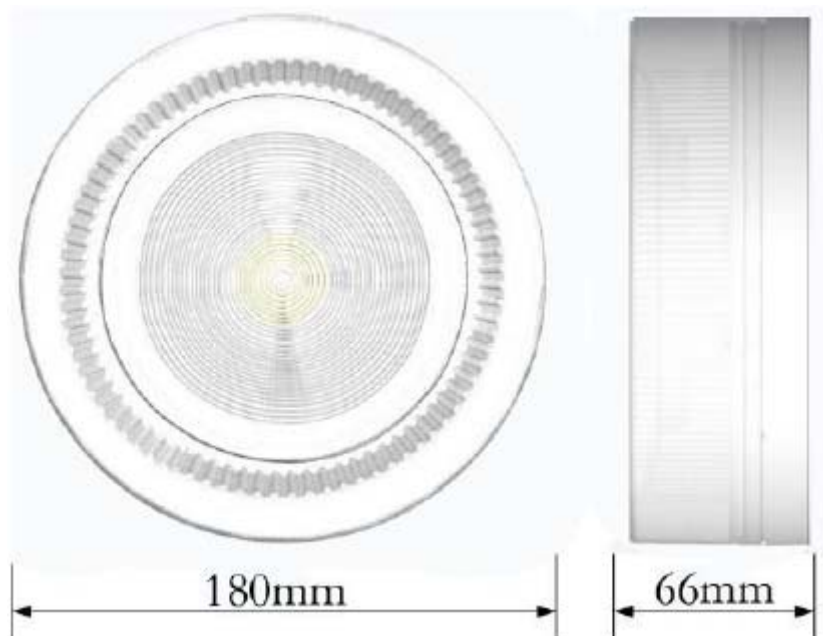
CL-/H/XX/5W/C

① ② ③ ④ ⑤

- ① CL: Ceiling light
- ② H: High Power LED Type
- ③ XX: WW(Warm White) W(White)
- ④ 5W: The LED power is 5W
- ⑤ C: AC100-240V input

Product Dimensions:

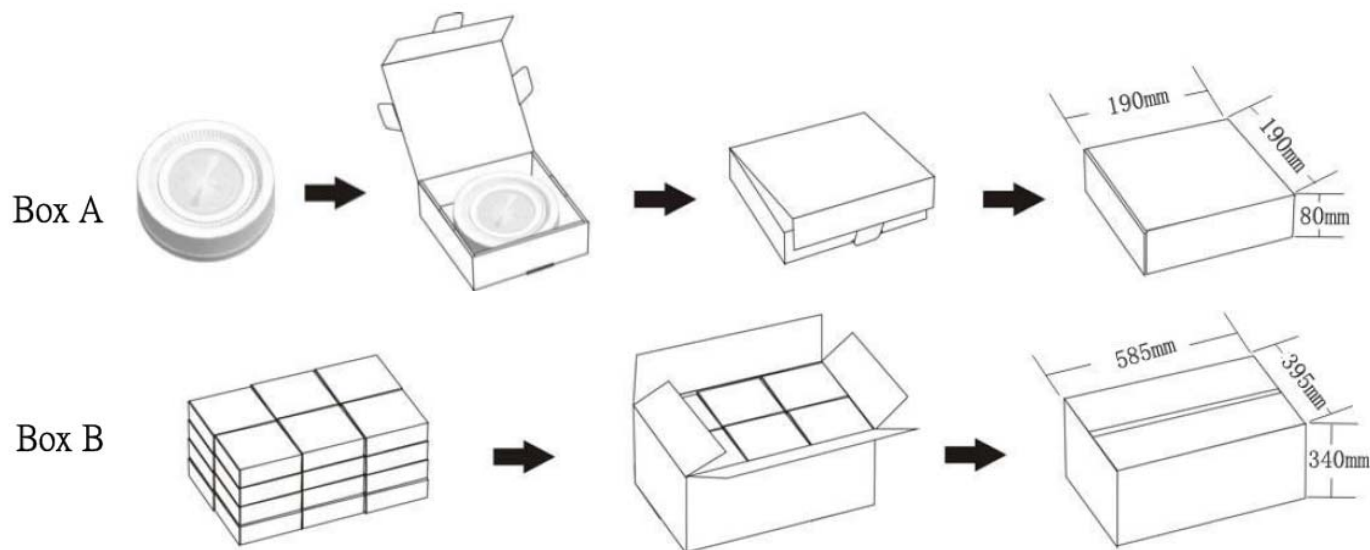
- Body: PCM
- Cover: PC



NOTES:

1. All dimensions unit in mm
2. Tolerances is ± 0.5 mm unless otherwise noted.

Package



Box Type	Dimensions	Package	Net Weight
Carrier Box A	190m×190mm×80mm	1pcs Outer Box	0.43Kg
Carrier Box B	585mm×395mm×340mm	24pcs Outer Box	11.30Kg

Safety Warning

1. Not suitable for dimmer switches, electronic switches and remote controls.